

**Barco tipo granelero**

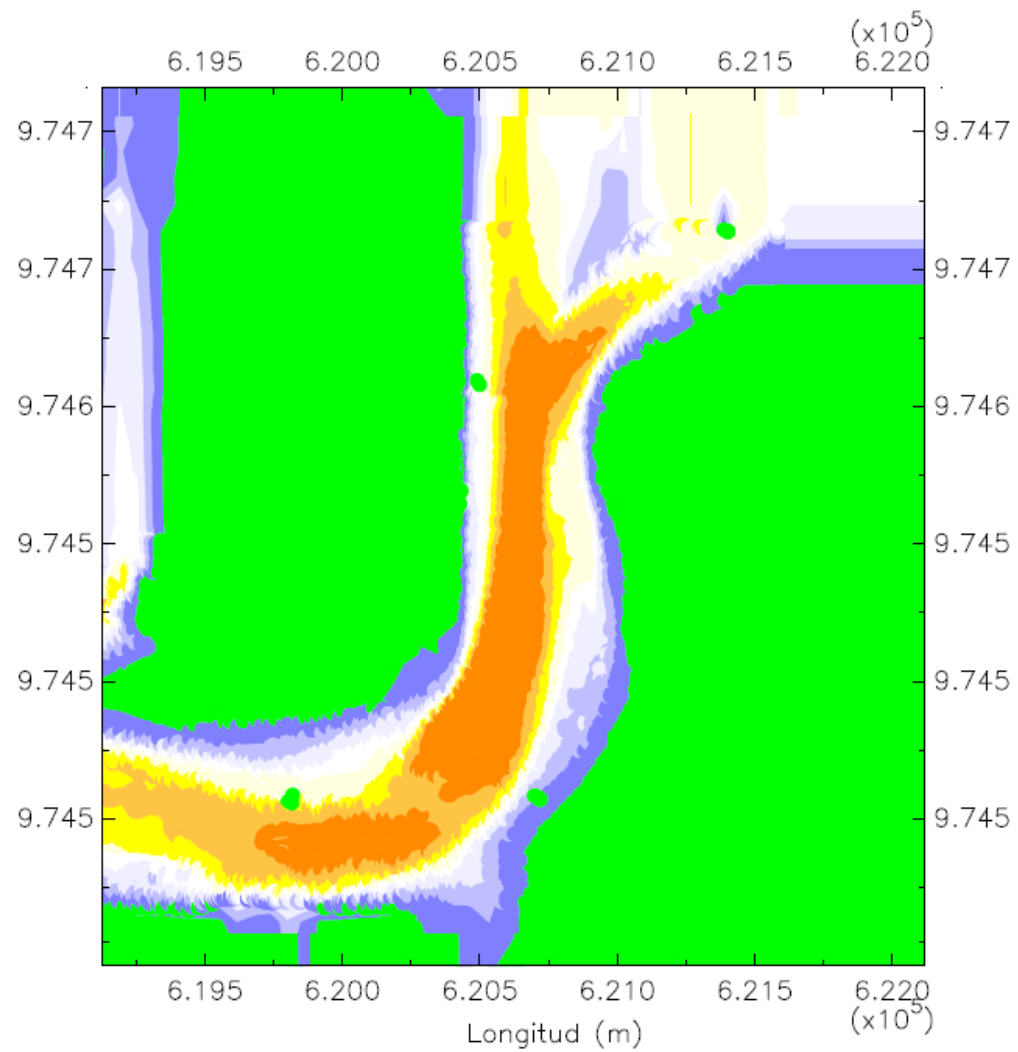
**Eslora: 225 m**

**Manga: 32.20 m**

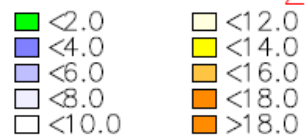
**Calado: 12 m**

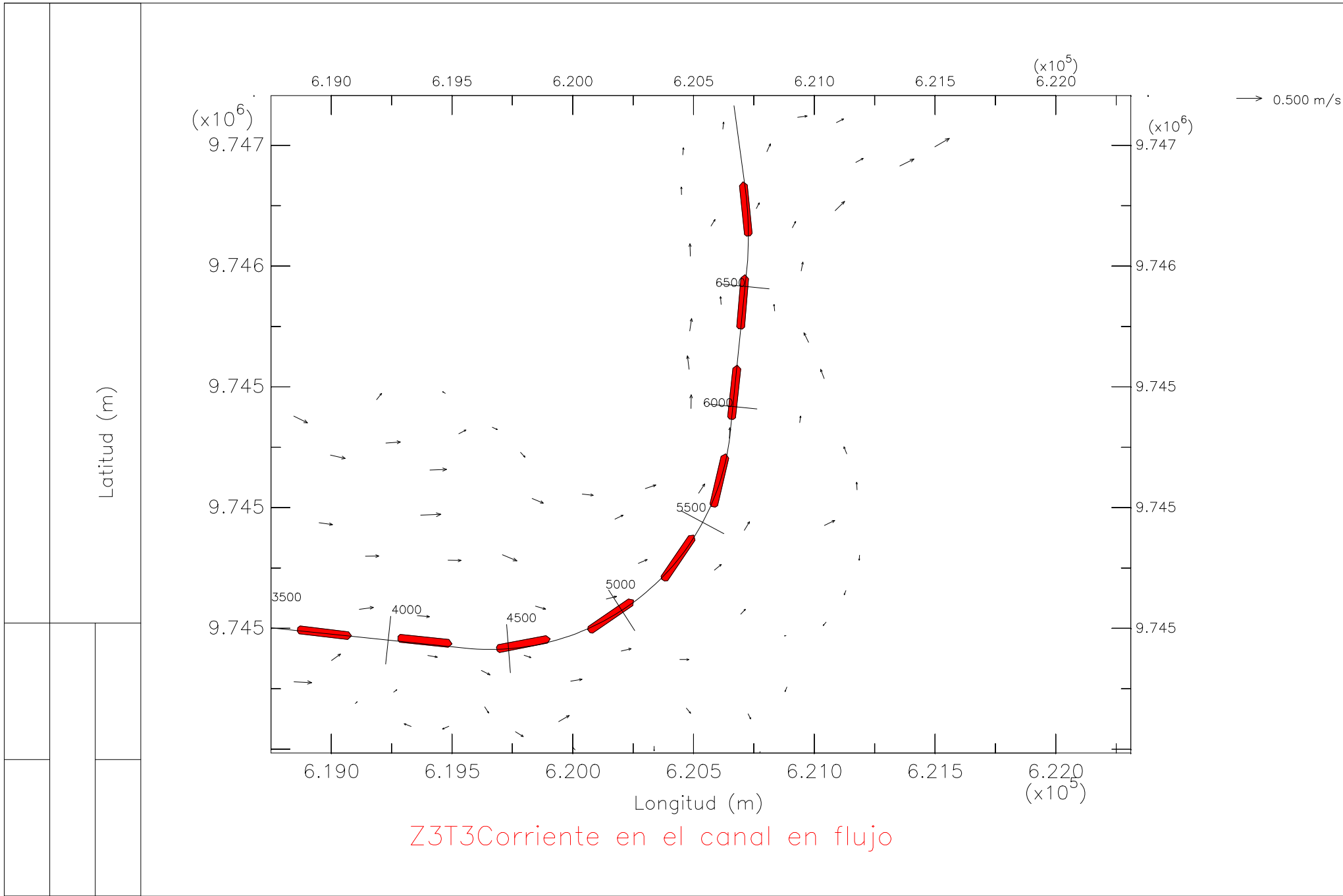
**En la zona 3, tramo 3**

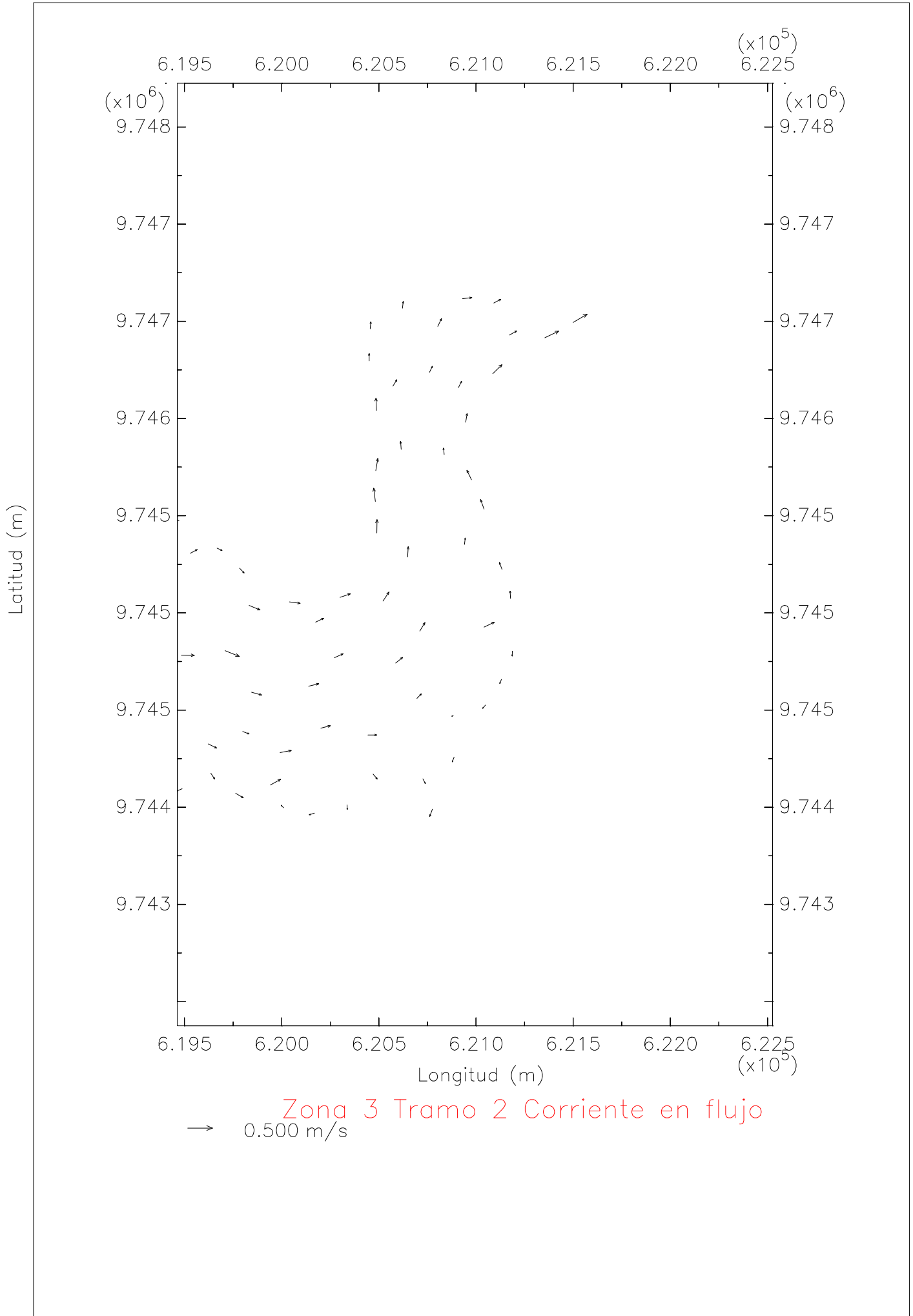
**Bajo condiciones de llenante**

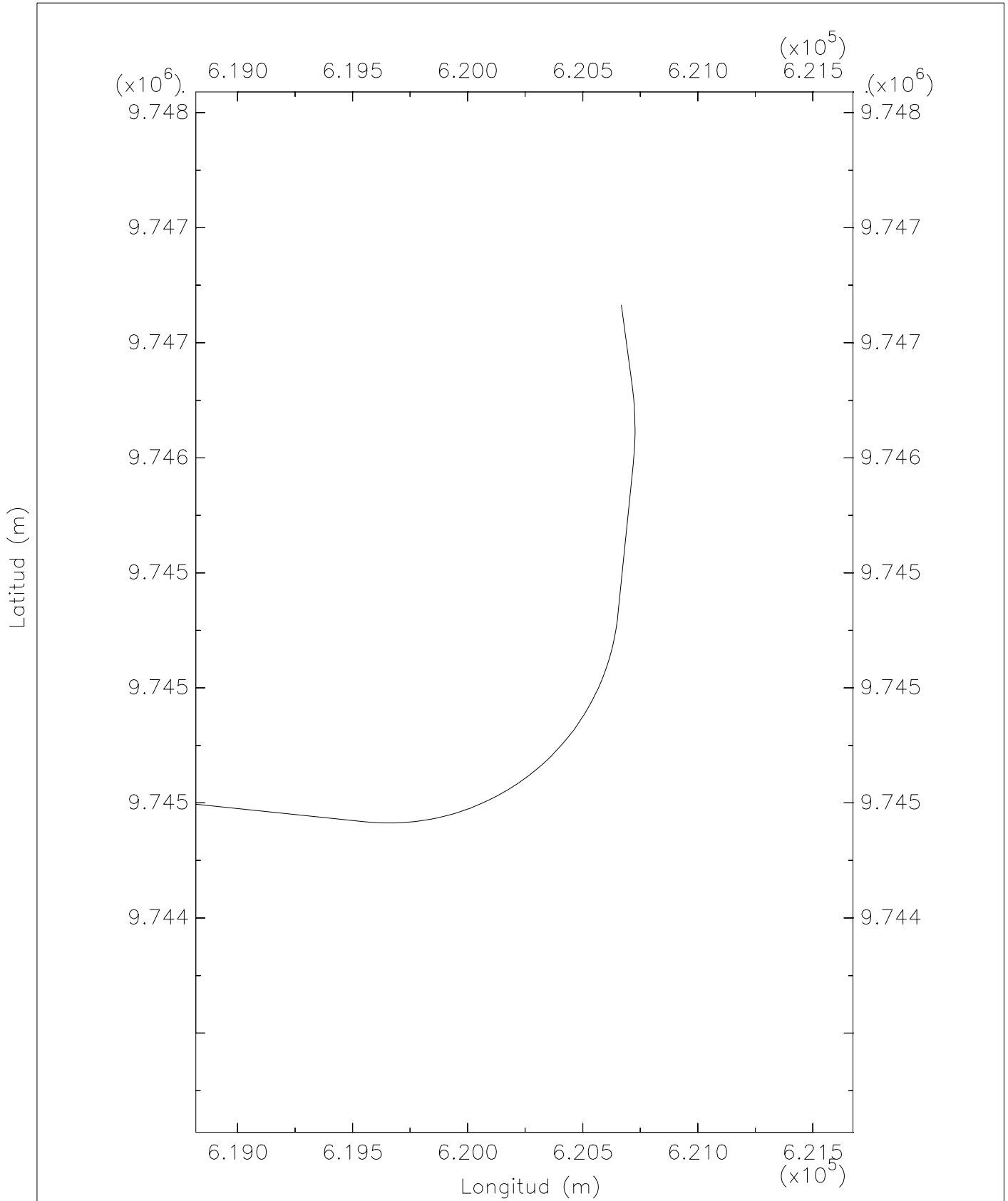


Zona 3 Tramo 3 Profundidad

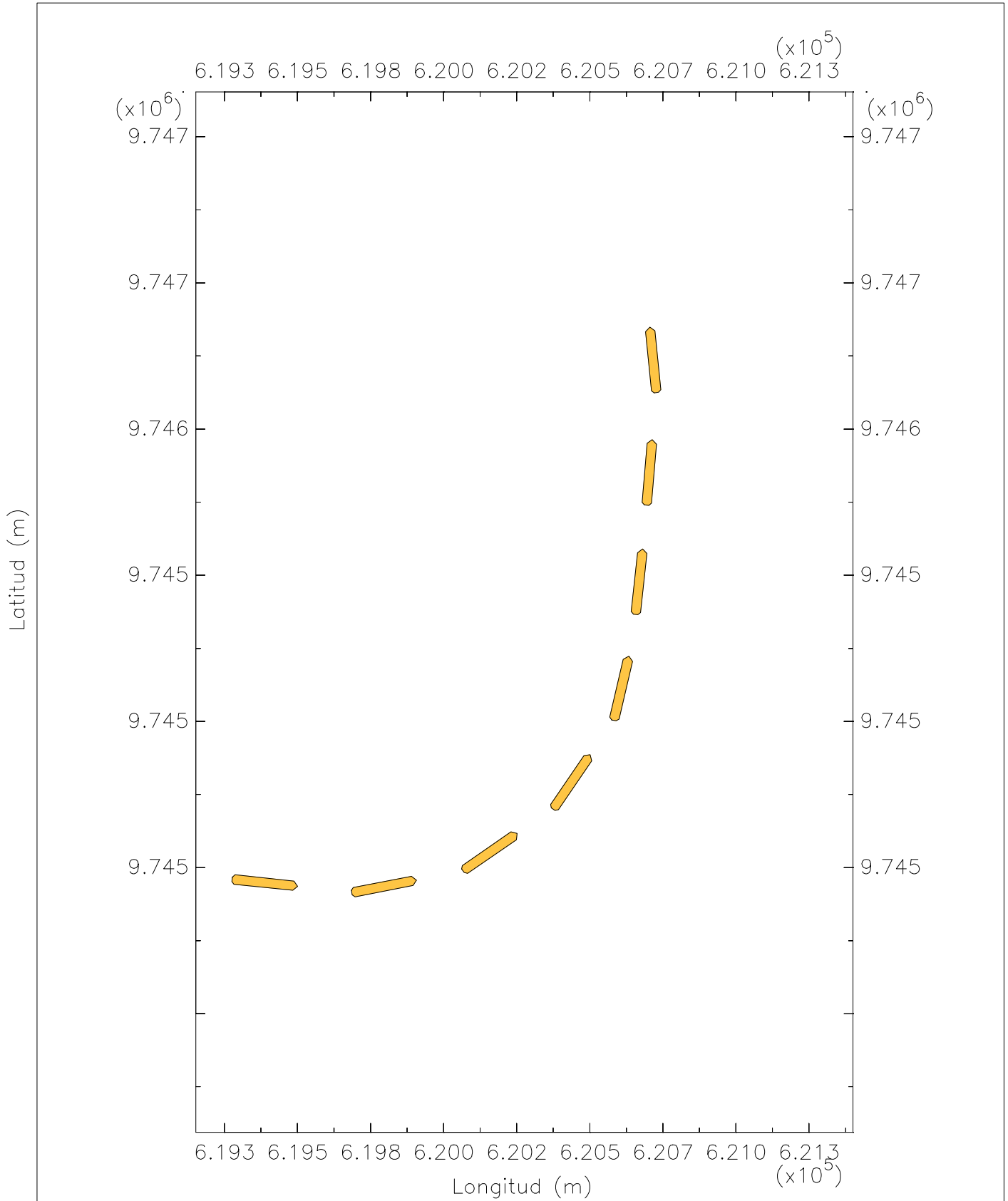




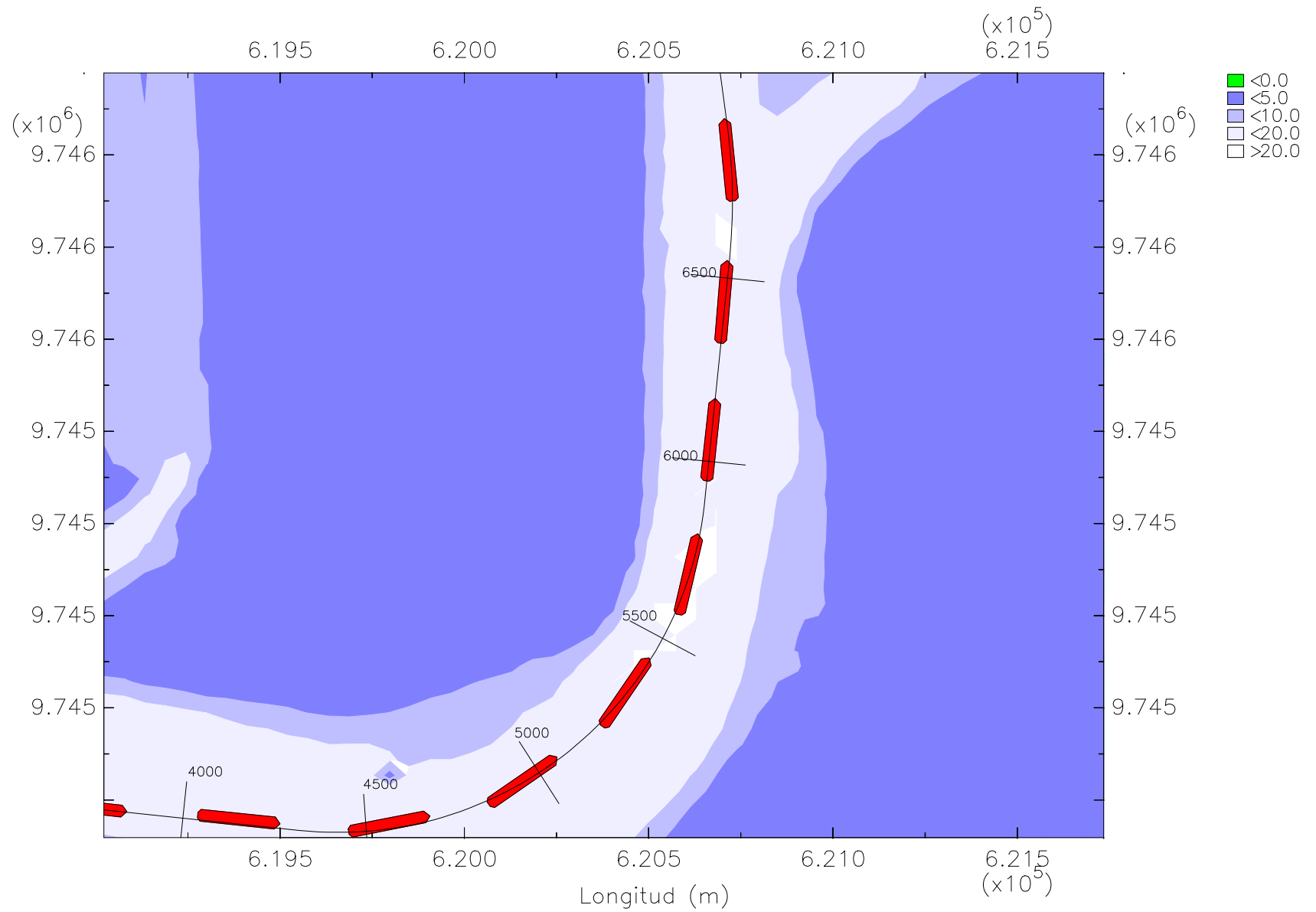




Zona 3 Tramo 3 Eje del canal



Z3T3 Trayectoria del barco granelero en flujo



Z3T3 Trayectoria del barco granelero en flujo